

# Eaton 5SC Short Depth Rack UPS

1500VA

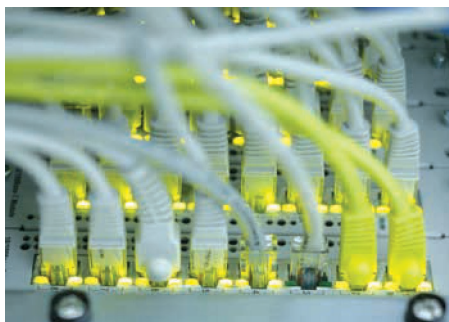


Short depth format for easy integration in small cabinets



#### Ideal for protecting:

- Rack or Tower servers
- NAS, Network equipments
- ATMs, Ticket machines, Kiosks



info@ansutek.co.nz  
www.ansutek.co.nz  
www.ansutekbiz.co.nz



Powering Business Worldwide

## Affordable protection for servers and networking systems

### Manageability

- The LCD interface provides clear status of the UPS key parameters such as input and output voltage, load and battery level, and estimated runtime. Essential configuration capabilities are also offered for output voltage, audible alarm and sensitivity.
- The 5SC offers USB and serial connectivity. USB port is HID compliant for automatic integration into Windows, Mac OS and Linux.
- A slot for an optional communication card (including SNMP/ Web card or relay contact card) is available on rack and R/T models. Eaton's Intelligent Power® Software Suite insures compatibility with all major OS including virtualization software.

### Reliability

- Pure sinewave output: When operating in battery mode the 5SC provides a high quality output signal for any sensitive equipment connected, such as active PFC (power factor corrected) servers.
- Buck and Boost operation corrects a wide range of input voltage variations through continuous regulation, without the use of batteries.
- Stronger, longer battery life: Eaton ABM® battery management technology uses an innovative three-stage charging system that extends battery life by up to 50%.

### Flexibility

- Designed to fit into short depth wall enclosures down to 500mm, 2 post racks or to be wall mounted.
- Rail kits and ANZ Input cord are included as standard.
- Easy battery replacement from front panel to extend UPS life.

# Eaton 5SC

1500VA

- 1 LCD interface
- 2 Panel for batteries replacement
- 3 USB port + Serial port
- 4 8 IEC 10A
- 5 Communication card slot
- 6 ROO/RPO terminal



**ansutek**  
Ph 0800 27 26 26  
info@ansutek.co.nz  
www.ansutek.co.nz  
www.ansutekbiz.co.nz

## Technical Specifications

Rating (VA/W)	1500VA/1050W
Format	Rack 2U

## Electrical characteristics

Technology	Line interactive High Frequency (Sinewave, Booster, Fader)
Input voltage range without using batteries	184 to 276 V
Output voltage and frequency	230V (-10/+6 %) (Adjustable to 220/230/240 V), 50/60 Hz $\pm$ 1Hz (Autosensing)

## Connections

Input	1 IEC C14 (10A)
Outputs for Rack or R/T models	8 IEC C13 (10A)

## Batteries

Typical backup times @50 and 70% load*	13/8
Battery management	ABM, automatic battery test, deep discharge protection

## Communication

Communication ports	1 USB port + RS232 serial port (USB and RS232 cannot be used simultaneously) ROO/RPO + card slot for Network-M2 card or Relay-MS card
---------------------	--

## Operating conditions, standards and approvals

Operating temperature	0 to 40°C
Noise level	<45dB
Safety	IEC/EN 62040-1, UL1778
EMC	IEC/EN 62040-2
Approvals	CE /CB report (TUV), cTUVus ,RCM

## Dimensions H x W x D in mm/ Weight

Dimensions	86.2 x 440 x 405 mm
Weight	17.8kg

## Customer service and support

Warranty	2 years
----------	---------

\* Runtimes are shown @ 0.7 power factor. Backup duration is approximate and may vary with equipment, configuration, battery age, temperature, etc.

In the interests of continuous product improvement all specifications are subject to change without notice.

**ansutek**  
Ph 0800 27 26 26  
info@ansutek.co.nz  
www.ansutek.co.nz  
www.ansutekbiz.co.nz