

GETTING STARTED

1. Either: Attach the battery cable to the indicator and clip onto a 12 Volt DC battery (car, tractor battery etc). ENSURE CORRECT POLARITY (red clip to positive, black clip to negative).
Or: Plug the *Iconix* AC Adaptor (optional accessory) into the indicator for mains powered operation.
2. Connect the two loadbar cables to the loadbar sockets on the underside of the indicator.
3. Press the **ON/ZERO** key. The scale will return to zero automatically. When complete, the ZERO pointer ▲ will show that the scale is at zero.
If a large load (such as a partly filled wool bale in a wool press) remains on the scale from previous use, the last weight will be displayed. The operator can continue the weighing session from where last finished. Alternatively, press **ON/ZERO** to return the scale to zero.
4. Check that the ZERO pointer ▲ is displayed. Load the animal onto the platform.
Press the **WEIGH** key. The animal is accurately weighed and the result is locked on the display.
5. Remove the animal from the weighing platform. The last animal's weight remains locked on the display. Check that the ZERO pointer ▲ is displayed between animal weighings. If the ZERO pointer does not appear, hold the next animal back, keep hands etc clear of the crate and press the **ON/ZERO** key. The scale will return to zero and the weighing session can proceed.
6. At the end of the weighing session, switch **OFF** the indicator. Remove the battery and loadbar cables.

ENSURE THAT THE CAPS ARE FIRMLY REPLACED ON THE LOADBAR CONNECTORS

WEIGHING MODES

Free Mode

At switch-on the scale operates in FREE mode, which is suitable for static load weighing. The display is continuously updated with the weight currently on the scale. The scale can be returned to FREE mode by pressing the **ON/ZERO** key, noting that the scale should be empty, since the scale will be zeroed.

Hold Mode

A press of the **WEIGH** key switches the scale to HOLD mode, which is suitable for live animal weighing. A press of the **WEIGH** key starts an averaging process which then displays the accurate weight of a moving animal. The weight is locked on the display until the next key press.

SYSTEM CARE

The FX1 weighing system has been designed to work reliably for long periods of time under adverse conditions. However like any equipment, common sense and care will assist in keeping it in good operating condition.

- ◆ Fit caps to cable ends and indicator sockets when not in use to protect from dirt and moisture. Hang the cable ends up, out of the mud and dust.
- ◆ Damage may occur if the capacity of the scale is exceeded.
- ◆ Loadbar cables must be kept in good condition.

SITE PREPARATION

The choice of weighing site is important for accurate weighing results and ease of use.

- ◆ A well chosen level site will ensure the best conditions for accurate weighing.
- ◆ The loadbars must be bolted to the platform or crate and be firmly attached to the ground or concrete pad.
- ◆ Any rocking or twisting of the platform could result in weighing errors.
- ◆ Adequate clearance around the platform is essential. Any binding or rubbing with posts or gates will produce weighing errors.
- ◆ The race bracket is best mounted on a fence or post and not the crate.
- ◆ Mount the indicator in a well lit position for best readability.
- ◆ A well chosen site will help animals flow smoothly through the system with the minimum of fuss.
- ◆ Mounting the indicator away from the crate will help to keep hands free of the crate when the weigh cycle is started.



Ph 0800 27 26 26

info@ansutek.co.nz
www.ansutek.co.nz
www.ansutekbiz.co.nz

SPECIFICATIONS

SUPPLY VOLTAGE 12V DC (19V DC maximum)

LOW BATTERY WARNING

When the battery volts drop to 11.5V the LOW BAT pointer ▲ appears. Replace the battery and continue. The indicator shuts down at about 10.5V.

MAXIMUM LOAD 2000 kg - Standard loadbars
3000 kg - Heavy Duty loadbars

OPERATING TEMPERATURE -5° to +50°C

ACCURACY ±0.5% of weight ± 1 division
(1 division = 0.1, 0.2, 0.5 kg etc depending on weight range)

MINIMUM CAPACITY 20 kg

The 0 - 20 kg range is available but is not part of the EMC (RF immunity) specification.

RESOLUTION

Standard loadbars

0 - 20 kg	0.1 kg steps
20 - 50 kg	0.2 kg steps
50 - 200 kg	0.5 kg steps
200 - 500 kg	1 kg steps
500 - 2000 kg	2 kg steps

Heavy Duty loadbars

0 - 100 kg	0.5 kg steps
100 - 200 kg	1 kg steps
200 - 1000 kg	2 kg steps
1000 - 3000 kg	5 kg steps

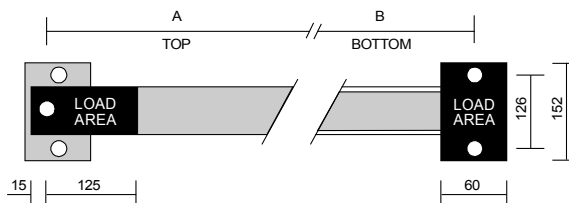
ZERO TRACKING

Small residual weights left on the scale between weighings (dung and dirt buildup) are automatically "zero-tracked" out and the scale returned to zero. As this occurs, the ZERO pointer ▲ will indicate that ZERO has been reached.

The zero-tracking amount is set to 0.5% of the weight displayed after the last press of the **WEIGH** key, with a maximum amount of 2.2kg.

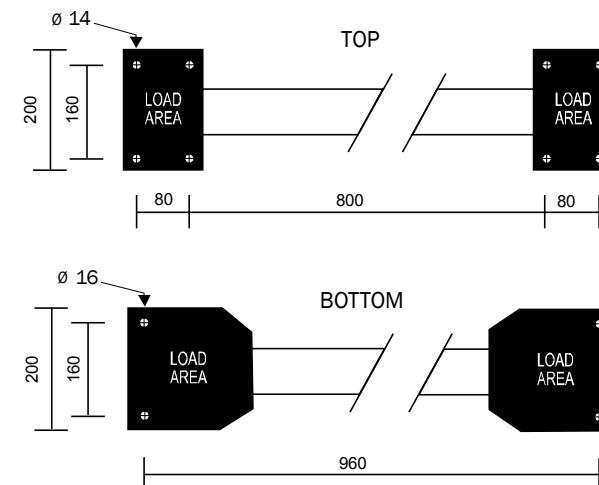
At switch-on the zero-tracking amount is initialised to 0.015% of capacity (0.3kg for 2000kg loadbars).

STANDARD LOADBAR SET 2000kg



LOADBAR	DIMENSION	
	A	B
600 mm	570	546
1000 mm	970	946

HEAVY DUTY LOADBAR SET 3000kg



Length	1000
Width	200
Height	115

ansutek
Ph 0800 27 26 26

info@ansutek.co.nz
www.ansutek.co.nz
www.ansutekbiz.co.nz